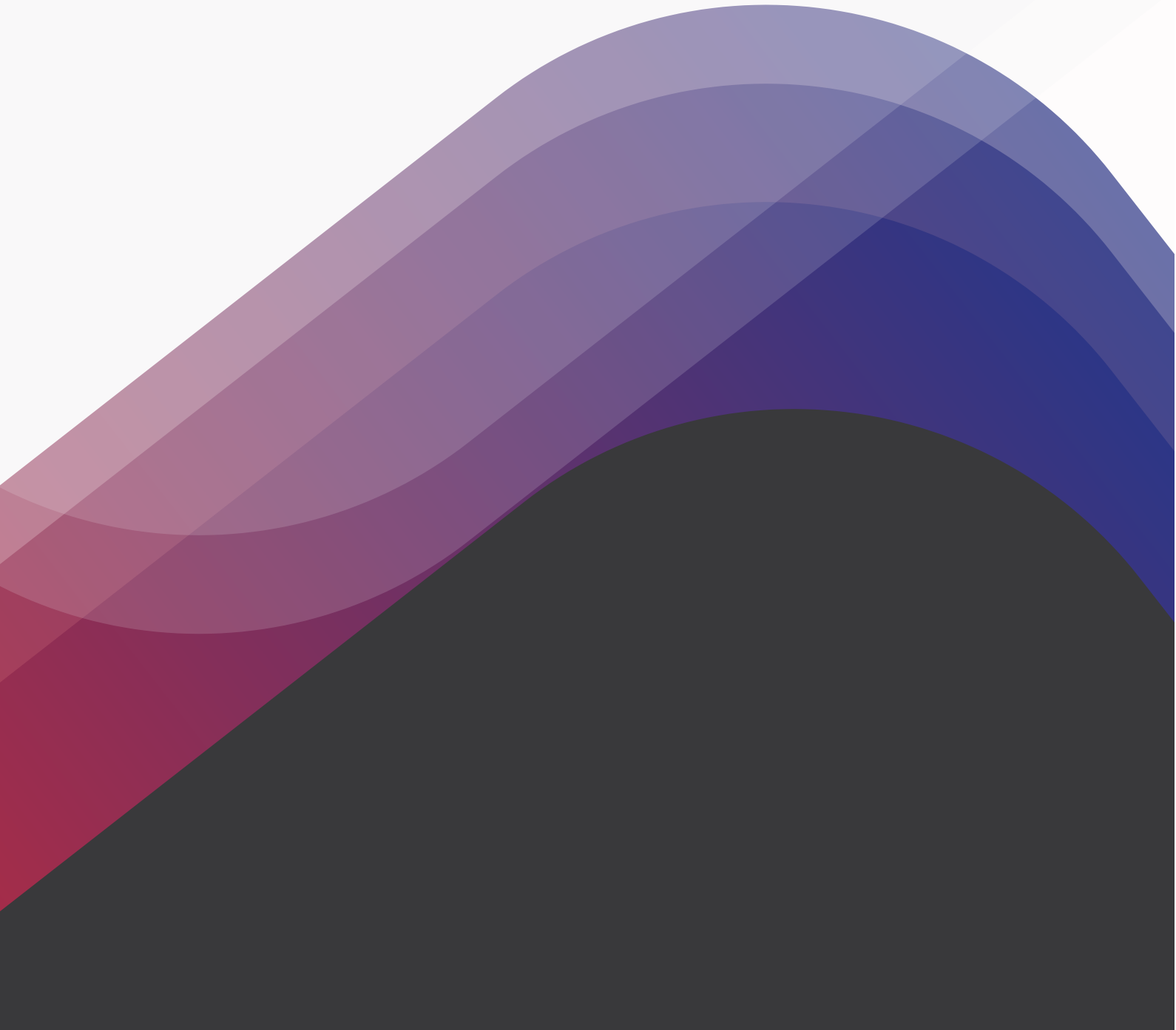




eBook

BMC Helix Migration A Comprehensive Guide





CONTENTS

CONTENTS

- INTRODUCTION
- HERE ARE SOME KEY CONSIDERATIONS
- WHAT IS BMC HELIX?
- KEY FEATURES AND BENEFITS
- SOME INTRIGUING STATISTICS
- DIFFERENT MODULES WITHIN BMC HELIX
- PREPARING FOR MIGRATION
- MIGRATION PLANNING
- DATA MIGRATION STRATEGY
- POST-MIGRATION ACTIVITIES
- BEST PRACTICES AND TIPS



INTRODUCTION

In the ever-evolving landscape of IT service management (ITSM), BMC Helix has emerged as a cutting-edge solution that organizations are increasingly migrating to. This comprehensive guide will walk you through everything you need to know about BMC Helix migration, from understanding what BMC Helix is to the key features, benefits, and the various modules within this robust platform.

Indeed, migrating to a multi-cloud environment with BMC Helix offers numerous advantages, including container deployment capability and cognitive automation, which can significantly enhance the customer experience. Additionally, its data-driven insights and robust report generation capabilities can provide valuable information for informed decision-making. However, a successful migration requires a well-thought-out strategy to address potential challenges and ensure security and compliance.

HERE ARE SOME KEY CONSIDERATIONS



Crafting a Successful Migration Strategy should align with the specific public cloud platform you plan to migrate to. Each cloud provider has its unique features and requirements, and your strategy should account for these differences. Consider the goals and requirements of your organization when crafting your migration strategy. What are you looking to achieve with the multi-cloud deployment, and how can BMC Helix support these objectives?



Proper Asset Mapping is crucial to ensure a seamless migration. You should have a comprehensive understanding of your existing IT infrastructure, applications, and data, and how they will transition to the multi-cloud environment.



Security and Compliance should be a top priority during the migration. BMC Helix's focus on security features can help protect your data and operations in the cloud. Ensure that your migration strategy incorporates robust security measures and compliance checks specific to the cloud architecture you're adopting. This includes encryption, access controls, and compliance with industry regulations.



Ongoing Monitoring and Optimization are critical after migration. BMC Helix can provide the tools to monitor your multi-cloud environment, track performance, and identify areas for improvement. Regularly review your cloud expenses, security measures, and compliance status to ensure your multi-cloud deployment remains cost-effective and secure.



To sum it up, BMC Helix's container deployment capability, cognitive automation, and data-driven insights make it a powerful solution for multi-cloud service management. However, a successful migration strategy must be carefully planned to align with your specific cloud platform, accurately map assets, forecast expenses, and prioritize security and compliance. By considering these factors, you can leverage the full potential of BMC Helix while ensuring a seamless and secure transition to a multi-cloud environment.



WHAT IS BMC HELIX?



BMC Helix is a cloud-native solution poised to reshape the landscape of IT service delivery. Its architecture is engineered to empower organizations with the tools required to streamline and elevate their service management practices. Deep-rooted in the latest technological advancements, At its core, BMC Helix leverages AI and machine learning to provide intelligent, automated, and predictive service management solutions that cater to the dynamic demands of modern businesses.

Why Migrating to BMC Helix is Important?

Migrating to BMC Helix is of paramount importance for organizations looking to thrive in today's dynamic business landscape. Here are the key reasons why this migration is crucial:



Scalability

With BMC Helix's cloud-based architecture, your ITSM can easily adapt to the growing needs of your organization. It provides the scalability required to accommodate changing workloads and business requirements.



Simplified Maintenance

Migrating to BMC Helix eliminates the need for extensive in-house infrastructure maintenance. This allows your IT team to focus on strategic initiatives rather than routine maintenance tasks.



Enhanced Efficiency

BMC Helix empowers organizations to optimize their service management workflows, resulting in faster issue resolution, improved customer satisfaction, and increased productivity.



AI-Driven Insights

BMC Helix leverages artificial intelligence to offer predictive analytics, ensuring that issues can be identified and addressed before they escalate. This not only reduces downtime but also cuts operational costs.



Compliance & Security

BMC Helix is designed with robust security features and compliance in mind, ensuring that your organization remains protected in an increasingly complex threat landscape.



SUCCESS FACTORS



Best ROI for the Enterprise

354% over three years with payback in less than six months



Choice of Consumption

Pick your cloud or hybrid provider with no lock-in



Reduced Risk

Complete ownership of "lift and shift" to the cloud



Industry-Leading

Ranked #1 Enterprise Service Management solution by Forrester Wave with four perfect ratings

KEY FEATURES AND BENEFITS

BMC Helix boasts a range of features and benefits, making it a compelling choice for organizations considering a migration:



Multi-Cloud Service Management

BMC Helix enables you to manage services across various cloud platforms, providing flexibility and control over your IT environment.



Service Automation

Its automation capabilities help in automating routine tasks, reducing manual errors, and freeing up resources for more strategic tasks.



AI-Powered Insights

Leveraging AI and machine learning, BMC Helix provides predictive insights to address potential issues before they impact your services.



Self-Service Portals

End-users can access self-service portals, empowering them to resolve common issues independently, reducing service desk requests.



Enterprise Integrations

BMC Helix seamlessly integrates with other IT tools and systems, ensuring a smooth and cohesive IT ecosystem



SOME INTRIGUING STATISTICS

1

As of 2021, over 90% of enterprises globally utilized a mix of on-premises, dedicated private clouds, various public clouds, and legacy platforms to meet their infrastructure needs.

2

By 2022, 70% of enterprises had implemented unified virtual machines (VMs), Kubernetes, and multi-cloud management processes and tools to facilitate robust multi-cloud management and governance across on-premises and public cloud environments.

3

It is projected that by 2025, 60% of enterprise IT infrastructure spending will be allocated to public cloud services, with a quarter of enterprise IT applications operating on public cloud platforms.

4

In 2022, 60% of organizations had invested in automating, orchestrating, and managing the development life-cycle of cloud-native applications and platforms.

5

By 2024, 70% of enterprises aimed to reduce the cost and complexity of customizing enterprise applications by increasing their expenditure on industry-specific Software as a Service (SaaS) applications and platforms.



DIFFERENT MODULES WITHIN BMC HELIX

BMC Helix comprises several modules to cater to various aspects of service management:



BMC Helix IT

Service Management

Optimizes IT service operations, covering incident, problem, and change management



BMC Helix Digital Workplace

Enhances user-centric service delivery with a consumer-like interface for service requests and support



BMC Helix Discovery

Automates IT environment discovery, maintaining precise and current configuration data



BMC Helix Multi-Cloud Service Management

Manages services across multiple cloud platforms, ensuring control and visibility

BMC Helix Business Workflows

Customizes business workflows to meet unique organizational requirements

In this comprehensive guide, we will delve deeper into the BMC Helix migration process, detailing best practices, potential challenges, and how to make the transition as smooth as possible. Whether you're considering migrating to BMC Helix or just want to enhance your understanding of this powerful ITSM solution, you've come to the right place.



PREPARING FOR MIGRATION



Assessing Your Current Environment

Begin by conducting a thorough assessment of your existing IT environment. This includes an inventory of hardware, software, applications, and data. Understanding your current setup is crucial for a successful migration.



Hardware and Software Requirements

Determine the hardware and software requirements for the target environment. Ensure that your infrastructure is compatible with the cloud or new platform you intend to migrate to.



Data Backup and Security Measures

Implement robust data backup procedures to safeguard your critical information during the migration process. Ensure that security measures are in place to protect data integrity and privacy.



Staff Training and Resources

Invest in training and resources for your staff. They should be well-equipped to handle the migration process effectively. This includes training on the new platform and any tools or technologies associated with it.

MIGRATION PLANNING



1 Defining Migration Goals and Objectives

Clearly define your migration goals and objectives. What do you aim to achieve with this migration? Whether it's improving performance, reducing costs, or enhancing scalability, having well-defined goals is essential.



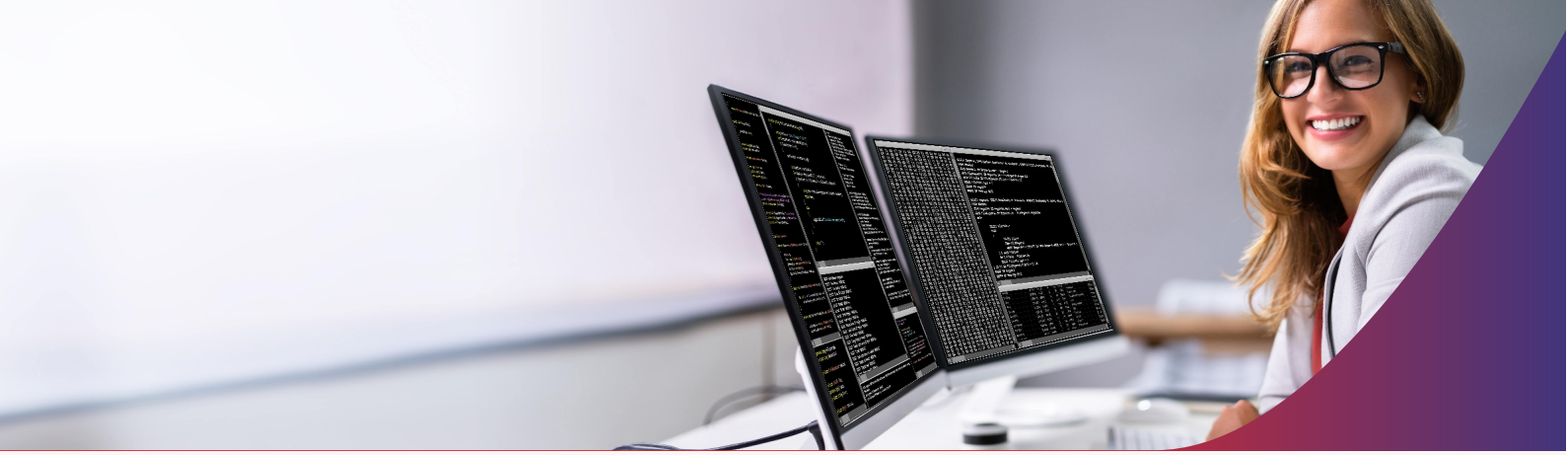
2 Creating a Project Plan

Develop a comprehensive project plan that outlines the entire migration process. This should include a step-by-step breakdown of tasks, responsibilities, and timelines.



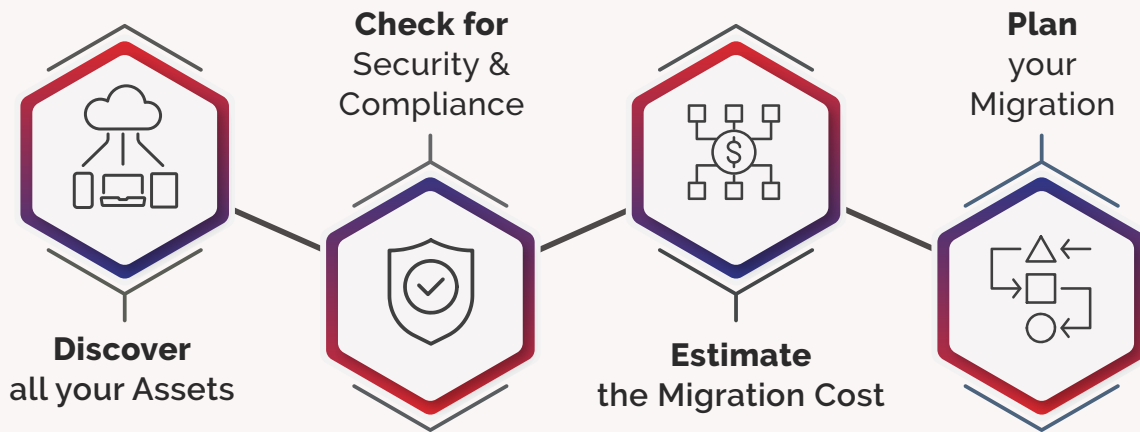
3 Setting a Realistic Timeline

Establish a realistic timeline for the migration project. Consider the complexity of your environment, the volume of data to be migrated, and potential challenges. It's important to set achievable milestones and deadlines to keep the project on track.



DATA MIGRATION STRATEGY

Before proceeding with the BMC Helix migration, it is essential to meticulously plan and execute the following steps



Cost Estimation

Before embarking on a cloud migration journey, it is paramount to conduct a meticulous cost analysis for transitioning to cloud platforms like AWS, Azure, and others. This necessitates simulating migrations with sample data, deploying foundational resources, including transactional data, customizations, and integration configurations, and aligning the cost estimation with diverse business perspectives and resource requirements. Efficient migration involves optimizing resource utilization by identifying and deploying only essential services while discarding unused ones.

Strategic Planning

The migration process to transition on-premises BMC Helix to multi-cloud environments such as AWS and Azure requires the involvement of domain experts. These experts play a critical role in:

- ▶ Identifying and analyzing gaps between on-premises and cloud-based solutions.
- ▶ Rapidly assessing the current maturity of cloud operations in terms of personnel, processes, and technology.
- ▶ Identifying and quantifying the business benefits, both financial and operational, that cloud migrations can yield.
- ▶ Establishing clear milestones and deadlines for a successful migration, ensuring alignment with business objectives.
- ▶ Seeking expert guidance on cloud operating models, procurement strategies, capacity optimization, and vendor management.

Asset Discovery

Prior to initiating a cloud migration, a comprehensive audit of all data center and cloud platform service assets, including AWS and Azure, is essential. This audit encompasses inventorying assets and assessing their interrelationships. It is crucial to determine data dependencies to ensure post-migration operational continuity across on-premises and multi-cloud environments.

Security & Compliance Assessment

Security and compliance checks should precede any cloud migration. Identify security risks and compliance considerations for the cloud environment, rectifying any gaps in AWS, Azure, or other cloud platform services before migration. This entails verifying security and policy-based compliance across production environments in multi-cloud settings. Automation tools can streamline remediation efforts and enhance the overall security and compliance posture through comprehensive dashboards, offering increased visibility and control

Every company will be a tech driven company by 2025, aspiring to evolve to an Autonomous Digital Enterprise.



POST-MIGRATION ACTIVITIES



The Go-Live Checklist

Develop a comprehensive go-live checklist that outlines all the tasks and checks necessary for the successful launch of the new system. This includes data validation, user access, and system functionality.



Creating a Project Plan

Implement robust monitoring systems to track the performance of the newly migrated system. Regularly review performance metrics and make adjustments as needed to optimize system efficiency.



User Training and Support

Provide ongoing training and support to end-users. Ensure they are well-versed in using the new system and have access to resources for assistance when needed.



BEST PRACTICES AND TIPS



Common Pitfalls to Avoid

Be aware of common pitfalls, such as inadequate testing, poor communication, or neglecting data quality. Take measures to avoid these issues to ensure a smooth post-migration experience.



Industry Best Practices

Stay updated with industry-specific best practices for data migration. Industries may have unique requirements and regulations that should be adhered to during and after migration. By focusing on these post-migration activities and following best practices, you can ensure a successful transition and continued operational excellence in your new system.



Tips for a Smooth Migration

Embrace best practices for data migration, including proper planning, thorough testing, and effective communication. Ensure that all stakeholders are informed and engaged throughout the process.

BMC HELIX-POWERED DIGITAL TRANSFORMATION

In the race to turn digital transformation from mere words into practical reality, businesses recognize the need for rapid adaptation to address long-standing challenges through hybrid solutions. The forthcoming years are pivotal as organizations grapple with defining the new workplace normal and strategizing their resilience through cognitive technologies like artificial intelligence and machine learning.

While many transformative initiatives often require time to yield results, the migration of essential business operations to cloud-based solutions offer almost immediate benefits. Cloud migration is set to play a substantial role as companies expedite their digital transformation journey.

For instance, traditional IT Service Management (ITSM) is typically reactive, burdened by manual processes and subpar user experiences. The integration of container technology within IT teams simplifies deployment, upgrades, patch management, and innovation adoption. This enables businesses to enhance agility, accelerate innovation, and scale as needed.

In response to rising expectations, organizations are prioritizing seamless experiences. Business units, users, and customers demand rapid, automated responses and streamlined processes. BMC Helix is well-equipped to deliver on these expectations, offering automated self-service processes and AI-driven chatbots that expedite ticket resolutions and boost productivity. This transformative and innovative platform offers a comprehensive range of service, channel, and cloud deployment options for enterprises. A tailored and disruption-free migration approach paves the way for immediate utilization of insights for innovation and business growth.





WITH BMC HELIX AND VYOM LABS, THE POSSIBILITIES ARE LIMITLESS

As the technology landscape continues to evolve at an unprecedented pace, organizations are constantly seeking innovative solutions to stay ahead of the curve. In this journey, BMC Helix has emerged as a beacon of transformation in the realm of IT service management (ITSM). We've embarked on a comprehensive exploration of BMC Helix migration, and we hope that this guide has equipped you with a deep understanding of its significance and the possibilities it unlocks.

As you venture into the future with BMC Helix, Vyom Labs stands by your side, ready to guide you through every step of the migration journey. Our commitment is not just to technical excellence but also to ensuring that your organization thrives in the digital age. We offer insights, best practices, and a strategic perspective to help you navigate the migration process with confidence.

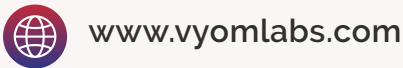
Your journey with BMC Helix is a journey towards a brighter tomorrow, where service management is more than just a function—it's a strategic asset that empowers your organization to excel in an ever-competitive landscape. With BMC Helix and Vyom Labs, the possibilities are limitless, and your path to service excellence has never been clearer.

As the future unfolds, embrace the power of BMC Helix, and trust Vyom Labs to be your partner on this transformative journey. Your next chapter in IT service management begins now, and we're excited to witness the heights your organization will reach with this innovative platform. Welcome to a new era of service excellence with BMC Helix and Vyom Labs.

ABOUT VYOMLABS

Our approach of using expert systems and automation in IT infrastructure and cloud management helps companies save 20 to 40% costs, achieve 3 to 10 times faster response to business, eliminate errors in operations and present value of IT in business terms.

If you are looking for solution partner or services partner to help you manage your IT, we can bring in unique tools, innovative approaches and years of experience serving customers of various sizes across the world.



www.vyomlabs.com



info@vyomlabs.com



India | USA | Australia | UAE

Follow Us:



in